



Power of Heritage

Probe, established in 1963, is South Africa's largest importer of automotive batteries and a leader in rotating electrics, with over fifty years of experience in distributing and providing aftermarket support for leading international brands. With brothers Frank and Rick Rovelli at the helm, the family-run business exemplifies a robust success story built on trust, service and understanding market needs.

Probe serves the heavy and light duty automotive, mining and construction equipment industries through a national dealer network, providing new, re-manufactured, genuine and approved replacement parts as well as the highest quality approved workshop and repair facilities. Leading automotive fitment centres and retailers are supplied with premium, maintenance free batteries imported largely from Brazil and Poland, the heart of the Probe range. We further provide the latest battery technologies for evolving solar applications.

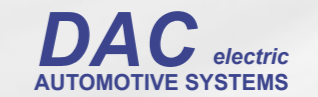
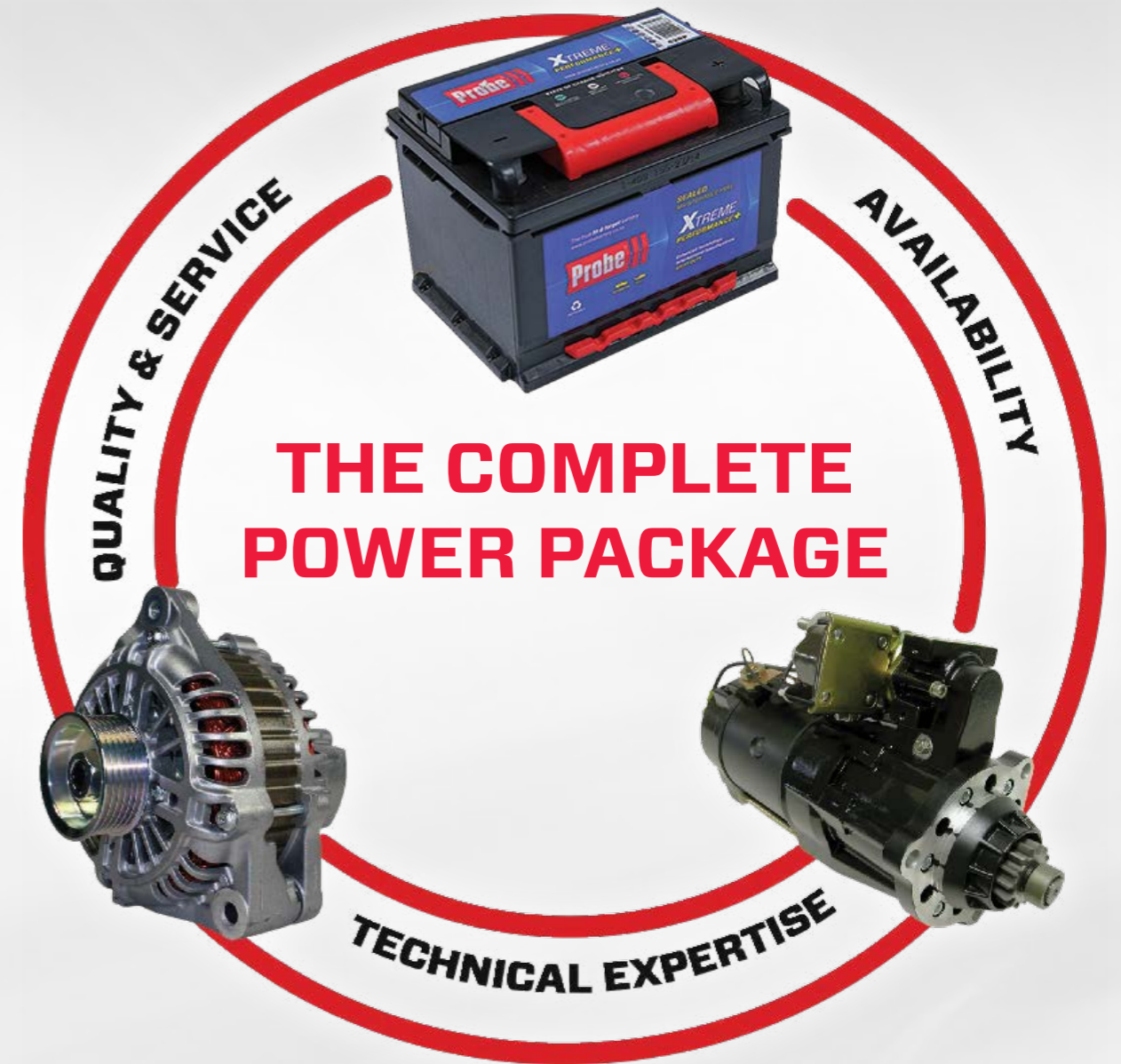
Building on Probe's proud heritage and established networks is a strategic vision to strengthen the company's competitive advantage through continued diversification of our product range as a trusted supplier of world class power solutions. Probe's expansion into power and air solutions through our Industrial Technologies division is contributing to the business becoming a R1 billion company by 2020.

Probe B-BBEE Shareholding

Probe remains committed to transformation in South Africa. Thesele Group acquired a 49.95% stake in Probe Corporation in 2016 and the company is an active shareholder.



Probe Automotive Solutions



"Probe is committed to providing quality and service, availability and technical expertise for every power need." Rick Rovelli, Probe COO

Probe Batteries – The Heart of Our Offering

Our premium, maintenance-free, 'fit and forget' battery is a TRULY sealed battery, with both plates in lead laminated and expanded calcium/calcium technology. It does not require service or the addition of water during its operating life.

The Probe heavy duty battery range is designed for use in special applications, and rugged environments. The technology ensures that the battery is resistant to road vibrations and extreme temperatures, making it the logical choice for South African conditions.

Probe offers a complete range of multipurpose and deep cycle batteries for all commercial and industrial applications, including marine, uninterrupted power supplies (UPS), solar, camping, back-up power and for telecommunication stations and energy lighting. This series includes lead calcium "wet plate type", tubular, AGM, GEL and Lithium Ion Phosphate technologies that cater for various deep cycle applications.

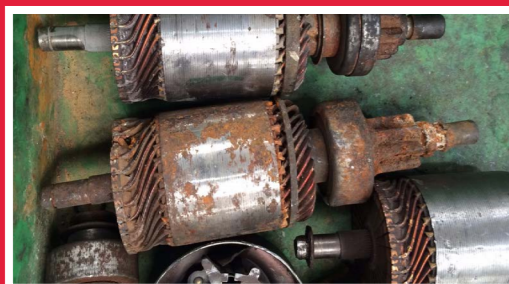
Probe further offers the latest battery technologies for evolving solar applications, including batteries and inverters, for both domestic and industrial markets.



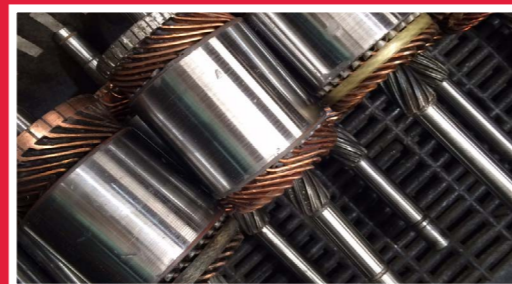
Assembly and Remanufacturing

The Probe manufacturing team delivers quality-controlled assembly of starters, alternators and field coils. We further deliver repair kits for these products.

To meet local demand for high quality, cost effective automotive components throughout the lifecycle of a vehicle as well as reducing environmental impact, Probe has become a leader in remanufacturing. Probe's remanufactured parts are known as the Probe Value Line.



Pre Remanufacturing



Post Remanufacturing

Quality Parts, Sourced Globally

Probe distributes a full range of auto-electrical components including batteries, alternators, starters and associated spares for American, European and Asian vehicles. A wide dealer network supports full national distribution of all products.

Probe's comprehensive range of starters and alternators have wide applications for a variety of vehicle types used in the automotive, trucking and agricultural sectors, to mining and construction equipment industries.

Probe is a licensed distributor of top international brands such as Delco Remy, Prestolite/Leece Neville and Horton, and in addition supplies other well-known and leading brands such as Bosch, CE Niehoff and DAC.

Probe is authorised to handle warranties on behalf of OEMs.

Our expanding product range includes engine cooling fans and viscous fan clutches, lamps and work lights, in particular Vision X.



Vision X

Vision X is a global leader in lighting. A revolutionary option for the industrial sector, but with wide applications across a diversity of sectors. Vision X can be found on boats and off road vehicles, and is extensively used in the automotive, transport, mining and agricultural sectors.



Integrated Mining Technologies

Integrated Mining Technologies (IMT) delivers products and solutions that improve safety and productivity in mining and, ultimately, reduces the Total Cost of Ownership for our customers. IMT represents General Electric, CAT and other international brands in the supply of specialised collusion avoidance equipment for mining equipment, as well as engineering specialised lock out safety switches to ensure mining equipment is intrinsically safe from an electrical point of view.

IMT was established through a process of consolidating the mining orientated businesses within the Probe Corporation. These entities have flourished with a long and proud relationship with the mining industry as the premium provider of auto-electrical parts and services. The IMT footprint continues to grow from its initial three operations in Witbank (established in 1969), Kuruman (established in 1993) and Rustenburg (established in 2005), to include operations in Zambia, Namibia (Windhoek) and Mozambique (Tete).

IMT is committed to building and maintaining strategic partnerships with our clients, made possible by an extensive strategically-based network located near mining operations. In addition to this, we endeavour to support our clients by maintaining on-site stock and technical support.

Probe Industrial Technologies

The Probe Industrial Technologies division provides quality air, power and safety solutions to industrial clients – combining optimal performance with huge energy saving benefits.

We offer strong after market service and support, including expert service technicians and the availability of spares at all times. We are able to conduct air audits and air compressor assessments to ensure that the best products are selected for specific applications.

AIR

A full range of compressors and related products from leading compressed air technology system providers are available for light, heavy and industrial use.

Products from Stanley Fatmax, Fini, Tolpec SCC and ALMiG include:

- Reciprocating compressors from 1.5 kW up to 15kW tank mounted compressors
- Electric rotary screw compressor range starting at 5.5 kW, up to 250-kW in three pressure variants
- An oil-free range of compressors in a water-cooled version from 90kW up to 415 kW
- Auxiliary quality air products including refrigerant air dryers, filters and drains

POWER

Power transmission solutions are provided through Fawick South Africa, a division of Probe Corporation that specialises in pneumatic brakes and clutches, industrial gearboxes, electric motors, bearings, as well as other related power transmission products servicing the industrial, mining and marine markets.

SAFETY

A complete range of Master Lock® Safety Lockout/Tag out products are available to complement a full range of safety padlocks. The exclusive line of LO/TO accessories includes innovative cable lockouts, gate valve, ball valve, circuit breaker and plug covers.



JOHANNESBURG - HEAD OFFICE

234 Albert Amon Road, Millinium Business Park, Meadowdale, Ext. 7
+27 (0) 87 353 4280 | www.integratedminingtechnologies.co.za



STANLEY
FATMAX.



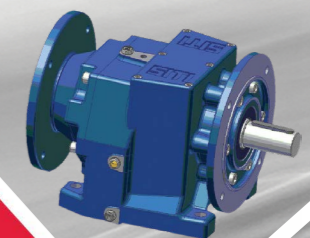
SCC
air compressors



Fini
COMPRESSORS



FAWICK
SOUTH AFRICA



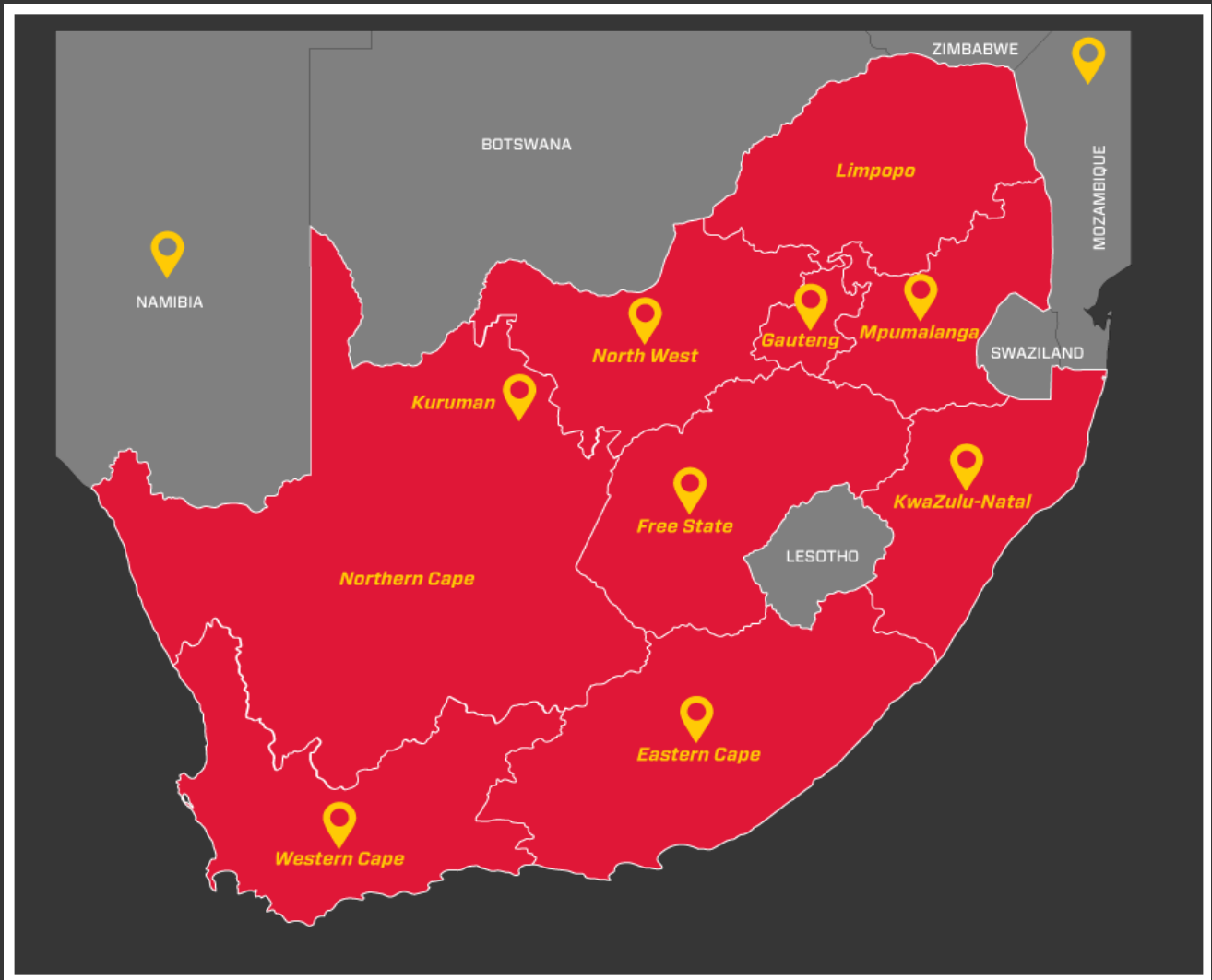
Master
Lock



National Branch Network

Probe offers comprehensive aftermarket support via a nationwide footprint, including full workshop facilities for electrical repairs, technical sales support and training, and assistance with preventative maintenance programs.

“Our national footprint is important for accessibility and service, offering same-day delivery from our branches, with deliveries twice a day in main centres.” Reevesh Singh, Probe Sales



www.probegroup.co.za
www.probebattery.co.za
www.probeindustrial.co.za

For more details on various branches please visit:

GAUTENG HEAD OFFICE CONTACT CENTRE
Johannesburg
245 Albert Amon Road,
Meadowdale, Germiston
Tel: +27 11 453 0924
Fax: +27 11 454 4767
Email: sales@probegroup.co.za